

Sifos Technologies Newsletter

PowerSync™ Analyzer News

Volume VI

May, 2010

PowerSync Analyzer Software Version 3.5 Now Available!

Sifos Technologies has released PowerSync Analyzer software version 3.5. The update and related documentation are now available. The software replaces version 3.4 originally released in October, 2009. PSA 3.5 software upgrades do not require any firmware upgrades to the PSA-1200 but will require firmware upgrades for the PSA-3000 if LLDP Emulation or IEEE 802.3at PSE Conformance Test features are activated on the instruments.

PSA Software Version 3.5

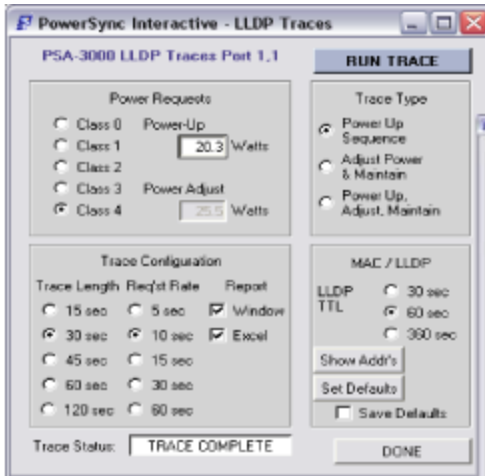
PSA software version 3.5 offers further enhancements in many areas including:

- Host platform support for any dual-core PC processor, Vista and Windows 7
- LLDP Emulation and diagnostic capabilities with PSA-3000 and PSL-3000
- IEEE 802.3at PSE Conformance Test Suite updates
- IEEE 802.3af PSE Conformance Test Suite enhancements
- PoE Service Analyzer application rolled to PoE+ PSA-3000 platform
- PSA and PSL Interactive GUI enhancements and improvements
- PSA PowerShell Tcl-Wish enhancements and improvements

[PSA Software Version 3.5 Release Notes available here!](#)

Full LLDP Testing... Available NOW!

Sifos Technologies introduces the 802.3at LLDP Emulation and Analysis capabilities with the PSA-3000 and PSL-3000.



LLDP Trace Menu in PSA Interactive GUI

PSA-3000 LLDP Trace		PSA-3000 LLDP Trace									
April 05 2010 3:18 PM		PSE	Port	Trace Type	Requested	Allocated	Echo Time	Alloc Time	Int. Time	Time To Live	
PSA Address: 192.168.221.106		ACME 2412	S-1	Power-Up	7	7	10.7	10.7	15.1	300	
					PSE1	PSE1	3403935	3403935	3403935	3403935	
Time	From	To	Type	Requested	Allocated	Port Class	MD Capability	MDI Status	Power Class	Source	Priority
Para=20.6	PSE	PD	2	0.0	14.2	PSE	YES	ON	4 /Primary		LOW
0.0	PD	PSE	2	20.3	14.2	PD	N/A	N/A	4 /PSE		LOW
2.0	PSE	PD	2	20.3	0.0	PSE	YES	ON	4 /Primary		LOW
11.3	PD	PSE	2	20.3	0.0	PD	N/A	N/A	4 /PSE		LOW
22.8	PD	PSE	2	20.3	0.0	PD	N/A	N/A	4 /PSE		LOW
32.0	PSE	PD	2	20.3	20.3	PSE	YES	ON	4 /Primary		LOW

LLDP Protocol Trace Report

PSA software version 3.5 adds powerful new features for those working with new or developmental end-span PSE's that use Link Layer Discovery Protocol (LLDP) for Type-2 power enabling, power-negotiation and power management purposes. With the introduction of these features, the PSA-3000 and PSL-3000 LLDP options are now available to all customers through a simple key upgrade from Sifos.

PSE Conformance Test Suite for IEEE 802.3at

Sifos Technologies introduces the 802.3at LLDP Emulation and Analysis capabilities with the PSA-3000 and PSL-3000.

PSA software version 3.5 enables access to the enhanced "beta" version of the PSE Conformance Test Suite for **802.3at**. This test suite is designed to provide over 95% coverage of all PSE and LLDP PIC's items in 802.at. Access to this suite requires a PSA-3000 that is fully enabled for the PSE Conformance Test Suite and also requires a Sifos-furnished PowerShell PSA command utilized to enable or disable the new test suite.

The Beta Version PSE Conformance Test Suite for **802.3at** currently offers the following tests:

- **det_v**
- **det_i**
- **det_range**
- **det_time**
- **det_resource**
- **class_v**
- **class_time**
- **class_err**
- **pwrap_time**
- **pwrnd_time**
- **pwrnd_pwrncap**
- **classlldp**

Under PSA 3.5, new Beta Versions of the 802.3at PSE Conformance Test Suite may be added at any time without further PSA software upgrades. Tests to be added include:

- **pwrnd_v**
- **pwrnd_maxi**
- **pwrnd_overld**
- **pwrnd_overld**
- **mps_ac_pwrnd**
- **mps_ac_vf**
- **mps_ac_voff**
- **mps_dc_valid**
- **mps_dc_pwrnd**
- **pwrnd_time**
- **pwrnd_v**

See "[IEEE 802.3at Conformance Test Suite PICS Coverage](#)" for a complete description for the IEEE 802.3at PICS coverage included in the IEEE 802.3at Conformance Test Suite for the PSA-3000.

Note! PSA-3000 and PSL-3000 instruments must be upgraded to test blade firmware version **3.0B** to take full advantage of the new IEEE 802.3at Conformance Test Suite features in PSA software version 3.5.

Quick Links

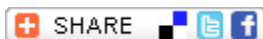
[Sifos Technologies Website](#)

[PSA Software Version 3.5 Release Notes](#)

[LLDP Emulation & Analysis Product Overview](#)

[IEEE 802.3at PSE Conformance Test Suite PICS Coverage](#)

[Customer Download Center](#)



[Forward email](#)

[SafeUnsubscribe®](#)

This email was sent to marketing@sifos.com by marketing@sifos.com.
[Update Profile/Email Address](#) | Instant removal with [SafeUnsubscribe™](#) | [Privacy Policy](#).

Sifos Technologies, Inc. | 1061 East Street | Tewksbury | MA | 01876

Email Marketing by



